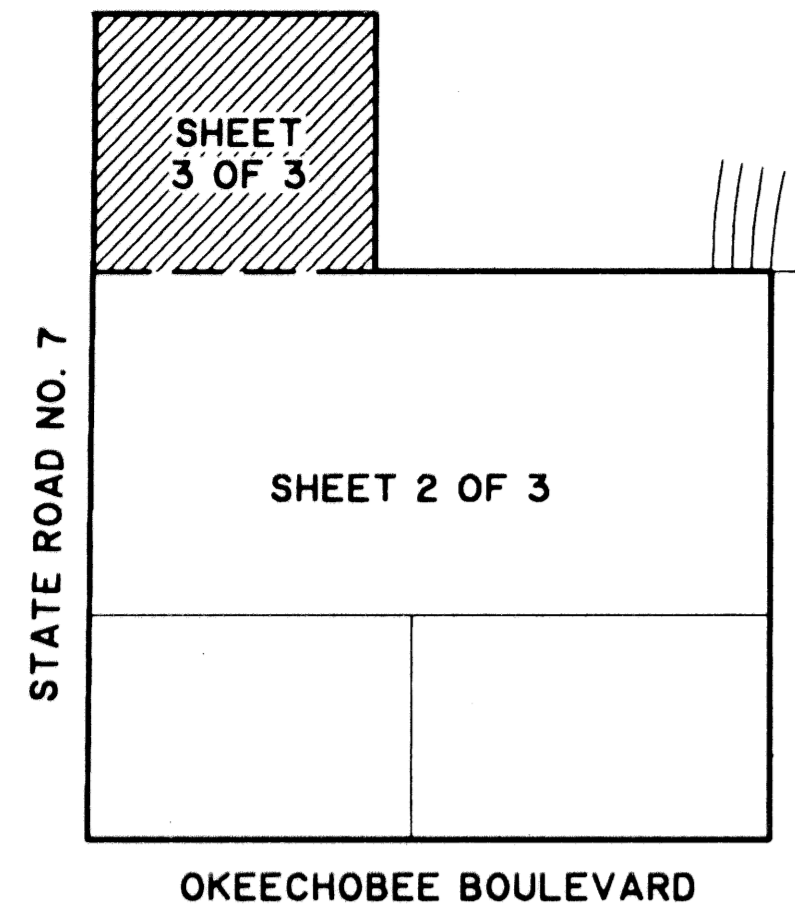


# BAYWINDS COMMERCIAL R.P.D. PLAT NO. 9

BEING A PORTION OF SECTION 19, TOWNSHIP 43 SOUTH, RANGE 42 EAST,  
CITY OF WEST PALM BEACH, PALM BEACH COUNTY, FLORIDA.  
SHEET 3 OF 3

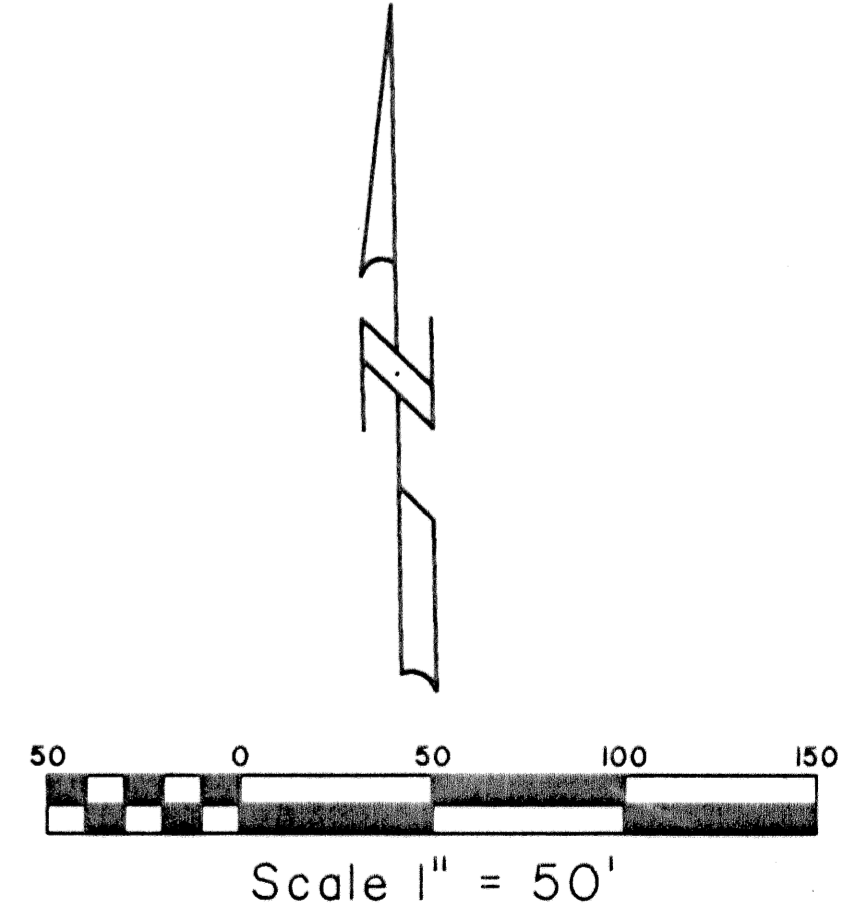
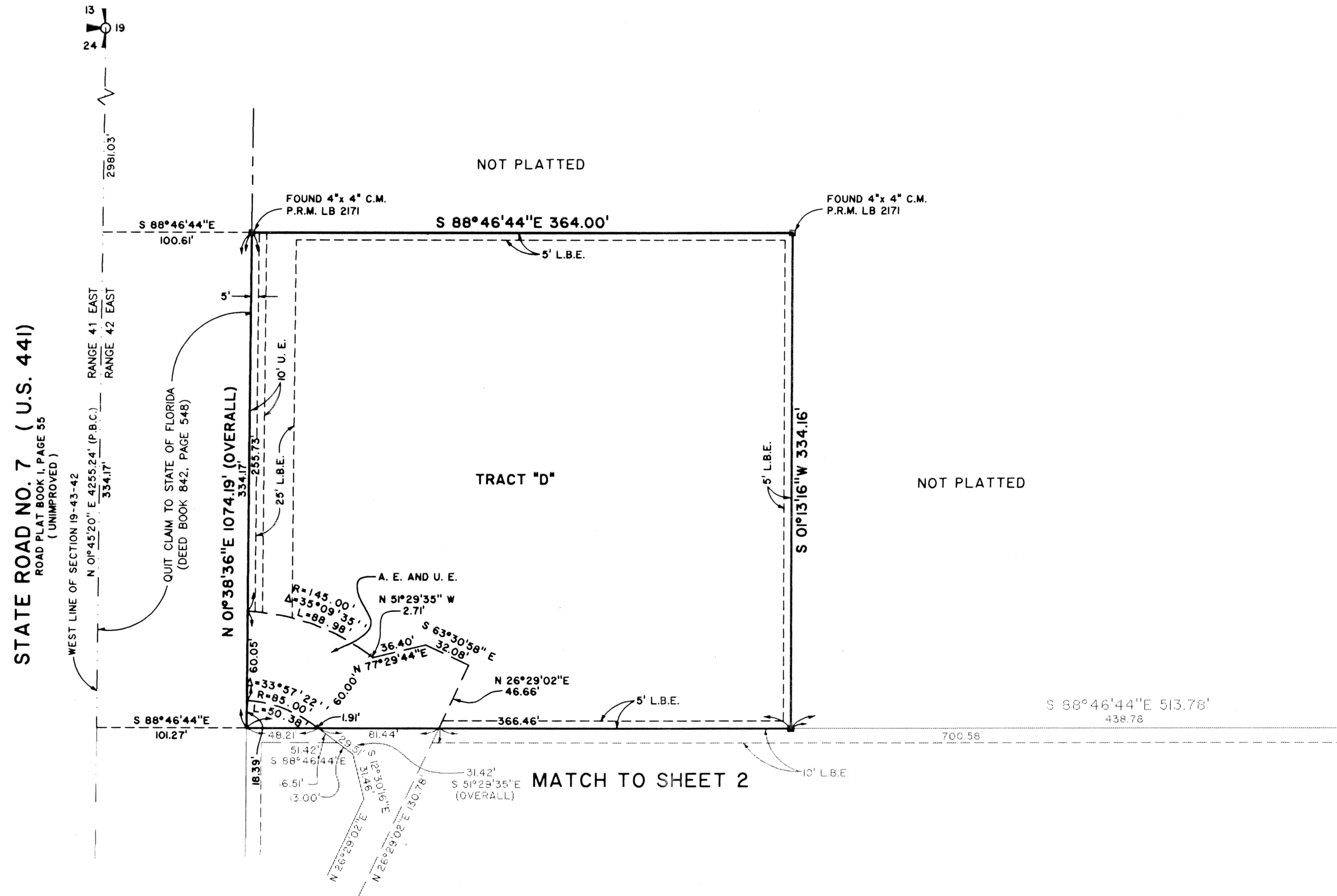
121



OKEECHOBEE BOULEVARD

KEY MAP  
NOT TO SCALE

STATE OF FLORIDA SS  
COUNTY OF PALM BEACH  
THIS PLAT WAS FILED FOR RECORD AT \_\_\_\_\_  
M., THIS \_\_\_\_\_ DAY OF \_\_\_\_\_ 2002  
AND DULY RECORDED IN PLAT BOOK NO. \_\_\_\_\_  
ON PAGE \_\_\_\_\_  
DOROTHY H. WILKEN,  
CLERK OF THE CIRCUIT COURT  
BY \_\_\_\_\_ D.C.



	<b>Landmark Surveying &amp; Mapping Inc.</b> 1850 Forest Hill Boulevard Ph. (561) 433-5405 Suite 100 W.P.B. Florida LB # 4396
	<b>BAYWINDS COMMERCIAL R.P.D. PLAT NO. 9</b>

C:\VFP\13\JMS\2500\2500SH13.FPJ UCT 11 09:21:28 2002 PLOTTED BY L. C. BISSPOTT